

**IMPRESSIONIST PAINTING
FOR BEGINNERS**

LANDSCAPE COMPOSITION

Leigh Cohn
Leigh@LeighPaintings.com

LANDSCAPES: HORIZON LINE



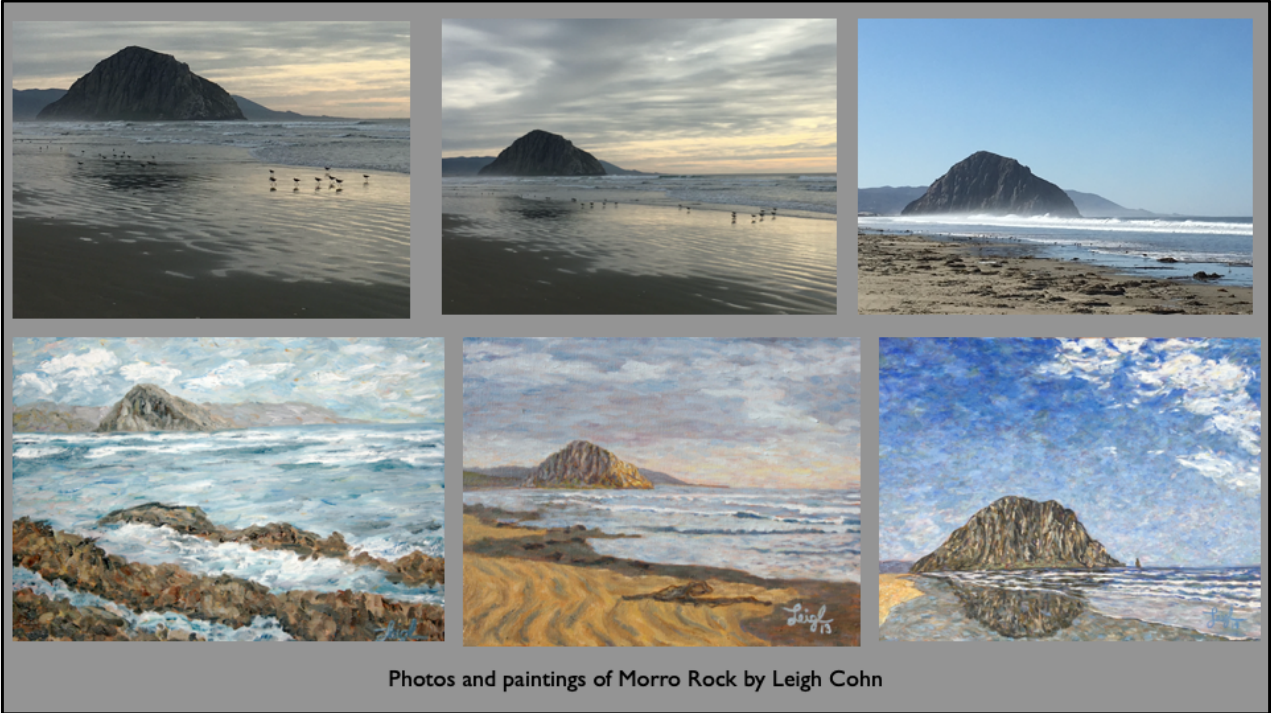
Renoir

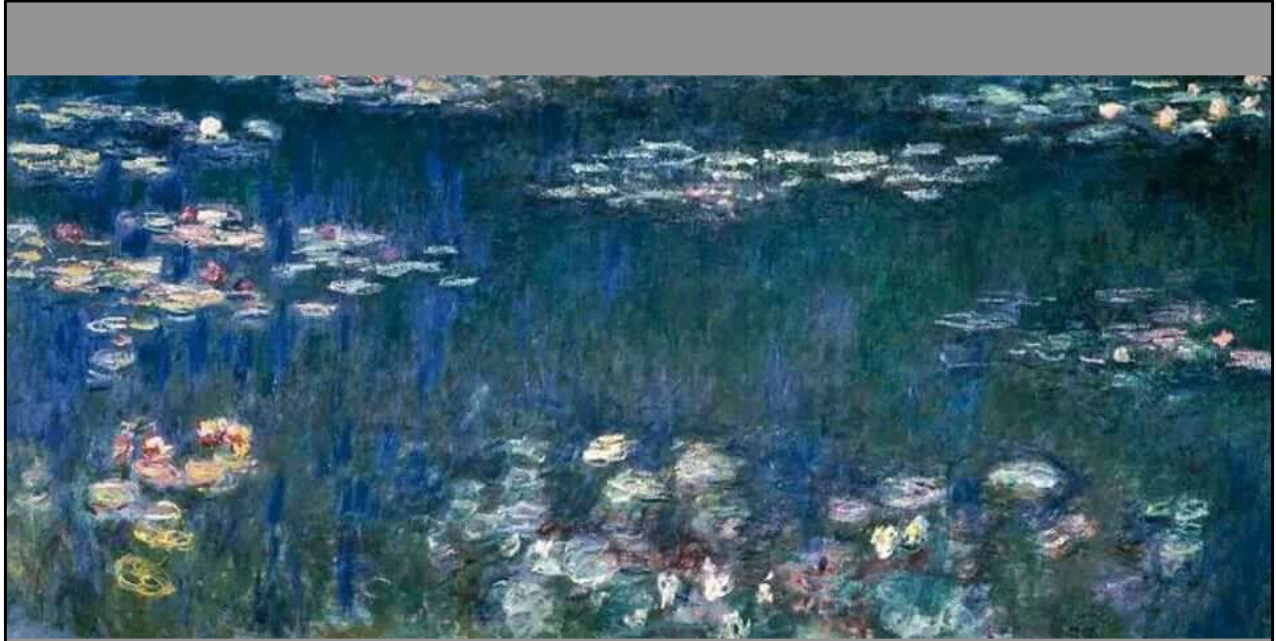


Sisley



Boudin



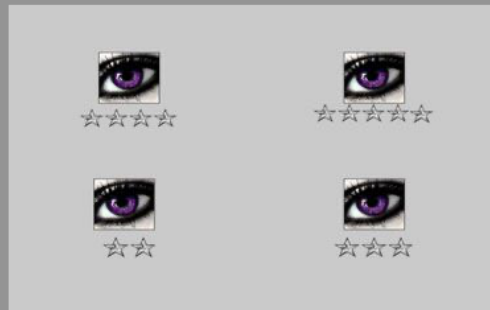


Monet: *Water Lilies, Green Harmony*, 1914-1917

LANDSCAPES: FOCAL POINT

"Most artists will agree that there are four options to place focal areas in a painting: top right, top left, bottom right and bottom left."

– ArtistsNetwork.com



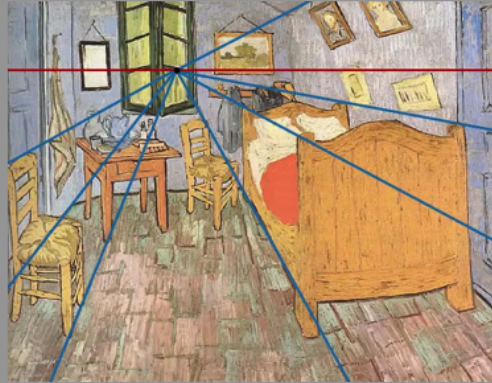
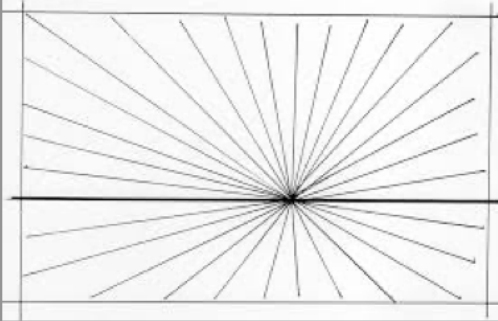
True?



Monet paintings of Argenteuil 1872-74, Pourville 1882

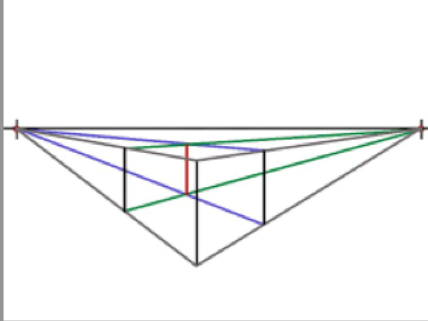
LANDSCAPES: PERSPECTIVE

One Point Perspective
Single vanishing point to create illusion of depth

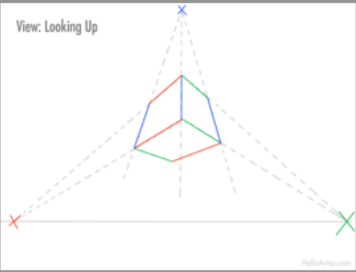
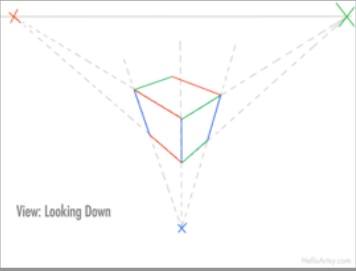


LANDSCAPES: PERSPECTIVE

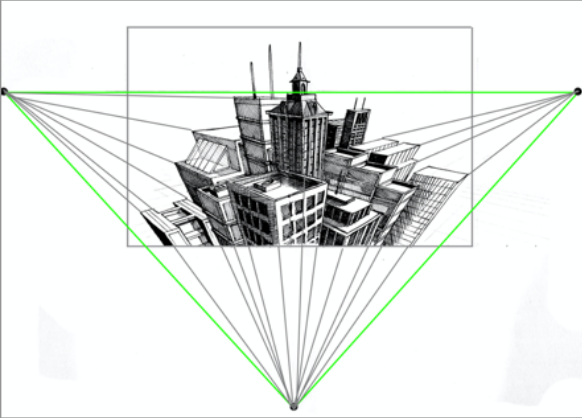
Two Point Perspective
Lines converge on two vanishing points



LANDSCAPES: PERSPECTIVE



Three Point Perspective
Lines converge on three vanishing points



ATMOSPHERIC PERSPECTIVE



Monet: *The Basin of Argenteuil* 1872

Distances are less distinct and more colors are more faded & lighter



Monet: *Gare St-Lazare* 1877

TRANSFERRING AN IMAGE TO CANVAS

- Sketching
- Using a grid
- Paint directly on canvas
- Camera obscura (projector)

TO BE CONTINUED NEXT WEEK...