

IMPRESSIONIST PAINTING FOR BEGINNERS

TRANSFERRING AN IMAGE TO CANVAS

Leigh Cohn
Leigh@LeighPaintings.com

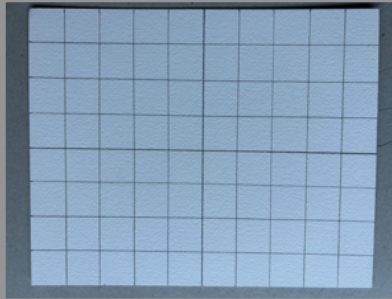
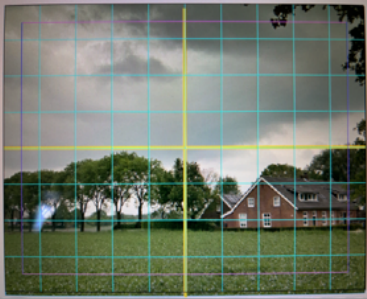
TRANSFERRING AN IMAGE TO CANVAS

- Using a grid
- Sketching
- Paint directly on canvas
- Using a projector (*camera obscura*)

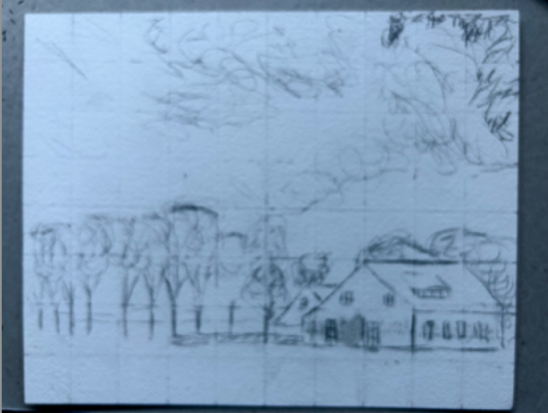
USING A GRID



USING A GRID



USING A GRID

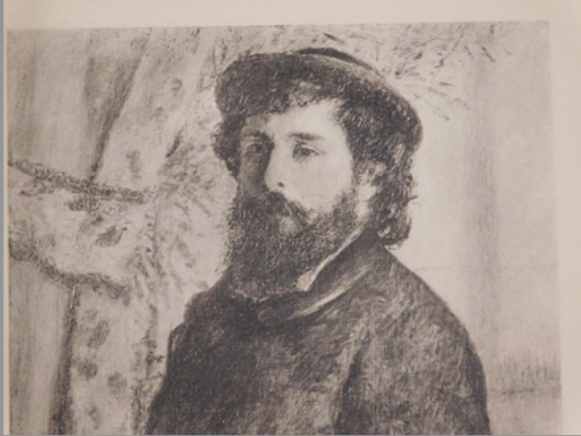


SKETCH



RENOIR: Dance at Bougival 1883

SKETCH



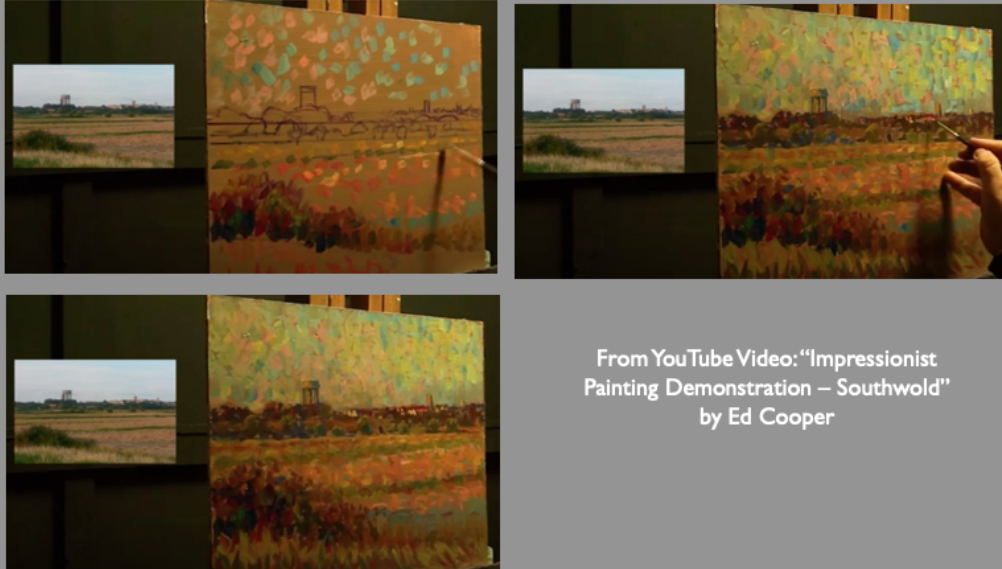
RENOIR: Portrait of Claude Monet 1875

PAINT DIRECTLY ON CANVAS



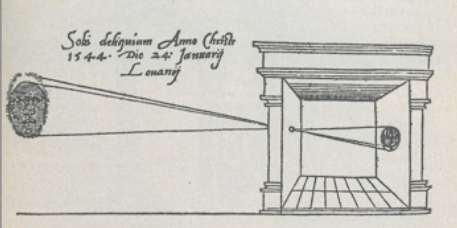
From YouTube Video: "Impressionist
Painting Demonstration – Southwold"
by Ed Cooper

PAINT DIRECTLY ON CANVAS

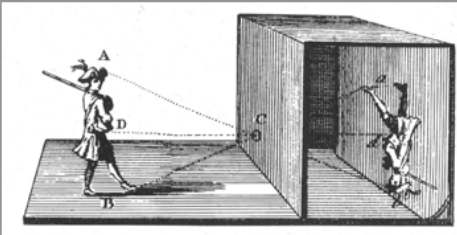


From YouTube Video: "Impressionist
Painting Demonstration – Southwold"
by Ed Cooper

CAMERA OBSCURA



First published picture of camera obscura 1545



In Vermeer's "Officer and Laughing Girl" (1655-1660), the geometric perspective is perfectly correct—quite unusual in 17th century paintings. Also, his extremely faithful and detailed depiction of maps in the backgrounds of his paintings.

DaVinci, Canaletto, Rembrandt, and Vermeer all probably used the camera obscura



PROJECTOR TECHNIQUE: SKETCH

Impermanence 2019



PROJECTOR SKETCH



Boathouse on Lake Kezar, ME 2012

PROJECTOR PAINT



Excerpted from "Impermanence Revisited" (2023)
YouTube: Leighpaintings

MONET'S LAYERS



Weeping Willow 1918-19

This cross section, using electron microscopy and other tools, revealed nine layers in one small area of "Weeping Willows"



PROJECTOR PAINT



My palette



Mixed paints to start



Projector setup



Post-session palette



Session 1 (21 minutes)

Light beige undercoat

Only session 1 is with the projector



Session 1



Session 2: Complimentary and "other" colors



Session 1



Session 2



Session 3



Undercoat enhances



Undercoat detracts

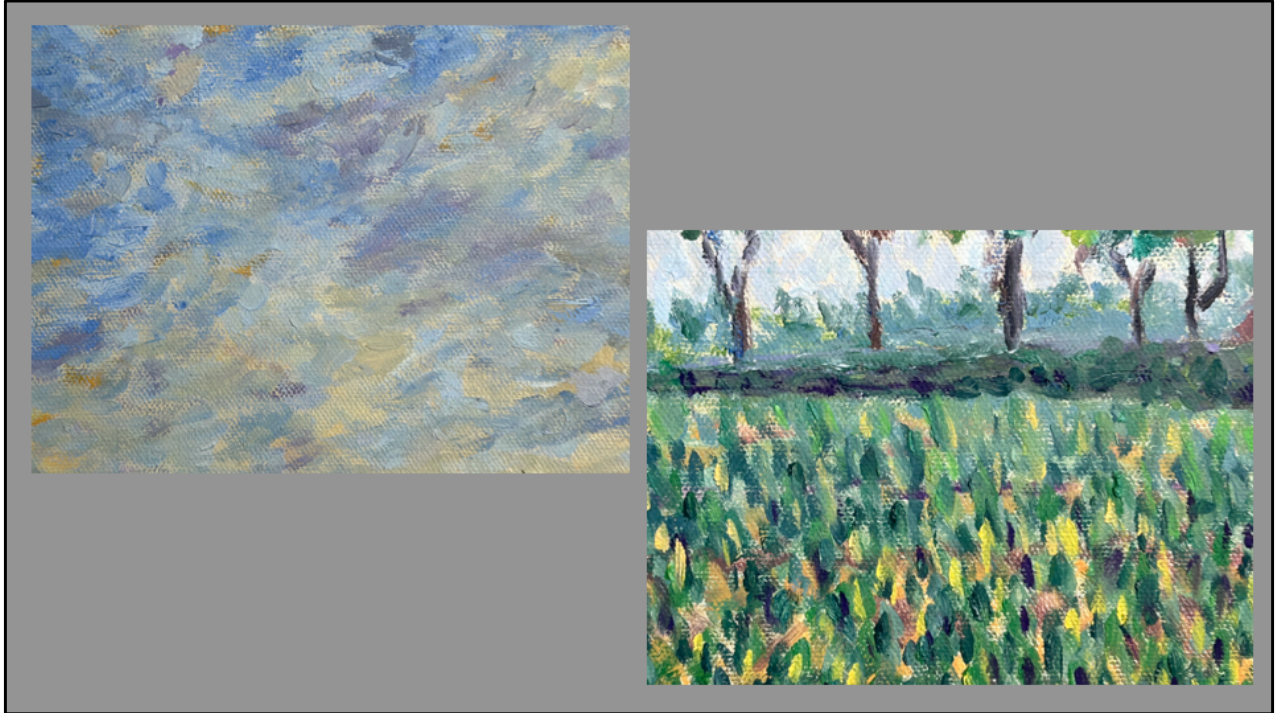


Undercoat still detracts





Session 4



Beige undercoat brightens the picture but can also seem unfinished

LIGHT BLUE UNDERCOAT





